

H M F H A R C H I T E C T S

SAUGUS HIGH SCHOOL PRELIMINARY DESIGN PROGRAM PROGRESS UPDATE

SAUGUS, MASSACHUSETTS

Lori Cowles, AIA Principal

August 1, 2016

SHS PRELIMINARY DESIGN PROGRAM

- Educational Visioning Report (draft for review)
- Facility assessment (complete
- Educational plan (draft for review)
- Space Summary (draft for review)
- Draft Alternatives

Proposed Space Summary - High Schools

Color Key: Black=HS, Red=MS, Green=Shared

COMBINED M-H		Existing Conditions	
ROOM TYPE	ROOM NFA ¹	# OF RMS	area totals
CORE ACADEMIC SPACES		67	72,470
(List classrooms of different sizes separately)			
Classroom - General	925	1	925
Classroom - General	855	2	1,710
Classroom - General	845	4	3,380
Classroom - General	745	13	9,685
Classroom - General	755	4	3,020
Classroom - General	735	5	3,675
Classroom - General	680	1	680
Classroom - General	585	2	1,170
Classroom - General	575	1	575
Classroom - General	555	1	555
Classroom - General	845	33	27,885
Classroom - General	1,010	3	3,030
Classroom - General	530	1	530
Teacher Planning			
Small Group Seminar (20-30 seats)			
Science Classroom / Lab	1,230	1	1,230
Science Classroom / Lab	990	3	2,970
Science Classroom / Lab	880	4	3,520
Science Classroom / Lab	1,010	6	6,060
Prep Room	200	1	200
Prep Room	145	1	145
Prep Room	135	3	405
Prep Room	95	2	190
Prep Room	225	3	675
Prep Room	120	1	120
Central Chemical Storage Rm	135	1	135
SPECIAL EDUCATION		4	15,085
(List classrooms of different sizes separately)			
Self-Contained SPED (Life Skills)	770	2	1,540
Self-Contained SPED (18-22 Program)	1,210	1	1,210
Self-Contained SPED Toilet			
Small Group Room			
Sub-separate Classroom	925	1	925
Resource Room	745	1	745
Resource Room	735	2	1,470
Resource Room	585	1	585
PROUD Program	1,350	1	1,350
ETL Office/Meeting Room	390	1	390
Speech/ Testing	325	1	325
Psychologist	325	1	325
Self-Contained SPED (Life Skills/Autism)	1,010	1	1,010
Self-Contained SPED Toilet			
Resource Room	845	2	1,690
Resource Room	1,010	1	1,010
Social/Emotional Room	845	1	845

14

PROPOSED								
Existing to Remain/Renovated			New			Total		
ROOM NFA ¹	# OF RMS	area totals	ROOM NFA ¹	# OF RMS	area totals	ROOM NFA ¹	# OF RMS	area totals
		0		56	74,810			0
			850	26	22,100	(Note: 700/23=30x85% utilization= 26)		
						NINE ADDITIONAL CLASSROOMS		
			850	30	25,500	(Note: 660/23=29, increased to 30)		
			400	12	4,800	(12 workstations + conference each)		
			1,440	8	11,520	(Note: qty matches existing)		
						TWO ADDITIONAL SCIENCE		
			1,440	6	8,640	(Note: qty matches existing)		
			150	8	1,200			
			150	6	900			
			150	1	150			
		0		3	13,580			0
			1,200	1	1,200			
			900	1	900			
			60	2	120			
			850	1	850			
			600	4	2,400			
			600	2	1,200			
			350	1	350			
			300	1	300			
			300	1	300			
			900	1	900			
			60	1	60			
			900	3	2,700			
			600	1	600			

MSBA Guidelines (refer to MSBA Educational Program & Space Standard Guidelines)			
ROOM NFA ¹	# OF RMS	area totals	Comments
		66,030	
850	47	39,950	825 SF min - 950 SF max
100	47	4,700	
500	3	1,500	
1,440	12	17,280	3 x85% ut=20 Seats-1 per /day/student
200	12	2,400	
200	1	200	
		14,100	
950	10	9,500	assumed 8% of pop. in self-contained SPED
60	10	600	
500	4	2,000	1/2 size Genl. Clrm.
500	4	2,000	1/2 size Genl. Clrm.

Color Key: Black=HS, Red=MS, Green=Shared

Version
11.24.2010

High School Space Summary

5.6 sf/student total

Color Key: Black=HS, Red=MS, Green=Shared

Version
11.24.2010

High School Space Summary

600 SF for first 300 + 1 SF/student Add'

Proposed Space Summary - High Schools

Color Key: Black=HS, Red=MS, Green=Shared

COMBINED M-H		Existing Conditions	
ROOM TYPE	ROOM NFA ¹	# OF RMS	area totals
Nurses' Office / Waiting Room	190	1	190
Interview Room			
Interview Room			
Examination Room / Resting	300	1	300
Examination Room / Resting	130	1	130
ADMINISTRATION & GUIDANCE			9,542
General Office / Waiting Room / Toilet	400	1	400
General Office / Waiting Room / Toilet	660	1	660
Security @ Main Entry			
Teachers' Mail and Time Room			
Duplicating Room	110	1	110
Duplicating Room	200	1	200
Records Room	60	1	60
Records Room	120	1	120
Principal's Office w/ Conference Area	280	1	280
Principal's Office w/ Conference Area	235	1	235
Principal's Secretary / Waiting			
Assistant Principal's Office - AP1	400	1	400
Assistant Principal's Office - AP2	280	1	280
Assistant Principal's Office - AP1	285	1	285
Assistant Principal's Office - AP2	285	1	285
Supervisory / Spare Office			
Conference Room	400	1	400
Conference Room	370	1	370
Guidance Office	130	3	390
Guidance Office	450	1	450
Guidance Office	180	1	180
Spare Office	160	1	160
Guidance Waiting Room	400	1	400
Guidance Waiting Room	400	1	400
Guidance Storeroom	75	1	75
Conference Room	130	1	130
Adjustment Counselor Office	130	1	130
Adjustment Counselor	285	1	285
Career Center			
Records Room			
MCAS Storage	370	1	370
In-School Suspension	480	1	480
In-School Suspension	637	1	637
Teachers' Work Room	500	1	500
Teachers' Work Room	290	3	870
CUSTODIAL & MAINTENANCE			2,265
Custodian's Office			
Custodian's Workshop			
Custodian's Storage	1,260	1	1,260
Recycling Room / Trash			
Receiving and General Supply	315	1	315
Storeroom			
Network / Telecom Room	550	1	550
Network / Telecom Room	140	1	140
OTHER Version			8,345

11.24.2010

PROPOSED								
Existing to Remain/Renovated			New			Total		
ROOM NFA ¹	# OF RMS	area totals	ROOM NFA ¹	# OF RMS	area totals	ROOM NFA ¹	# OF RMS	area totals
			200	1	200			
			100	1	100			
			100	1	100			
			100	3	300			
			100	3	300			
		0			6,205			0
			300	1	300			
			300	1	300			
			80	1	80			
			100	1	100			
			200	1	200			
			200	1	200			
			300	1	300			
			300	1	300			
			150	1	150			
			150	1	150			
			150	1	150			
			150	1	150			
			450	1	450	(Note: 450/15 = 30 people)		
			150	3	450	SEPARATED BY AGE GROUP		
			150	2	300			
			100	1	100			
			100	1	100			
			100	1	100			
			150	1	150			
			150	1	150			
			350	1	350			
			195	1	195			
			400	1	400	SPS SPECIFIC SPACE		
			400	1	400	SPS SPECIFIC SPACE		
			340	1	340			
			340	1	340			
		0			2,645			0
			150	1	150			
			250	1	250			
			375	1	375			
			400	1	400			
			490	1	490			
			780	1	780			
			200	1	200			
		0			0			0

MSBA Guidelines (refer to MSBA Educational Program & Space Standard Guidelines)			
ROOM NFA ¹	# OF RMS	area totals	Comments
100	3	300	
100	6	600	
		5,165	
680	1	680	
100	1	100	
200	1	200	
200	1	200	
375	1	375	
125	1	125	
150	1	150	
150	1	150	
120	1	120	
450	1	450	
150	7	1,050	
100	1	100	
100	1	100	
490	1	490	
195	1	195	
680	1	680	
		2,645	
150	1	150	
250	1	250	
375	1	375	
400	1	400	
490	1	490	
780	1	780	
200	1	200	
		0	

Proposed Space Summary - High Schools

Color Key: Black=HS, Red=MS, Green=Shared

COMBINED M-H	Existing Conditions		
ROOM TYPE	ROOM NFA ¹	# OF RMS	area totals
Town Maintenance Department	4,790	1	4,790
Adult Education Wood Shop	1,350	1	1,350
Town TV Studio	2,205	1	2,205
Total Building Net Floor Area (NFA)			234,747
Proposed Student Capacity / Enrollment			
Total Building Gross Floor Area (GFA) ²			353,000
Grossing factor (GFA/NFA)			1.50

PROPOSED								
Existing to Remain/Renovated			New			Total		
ROOM NFA ¹	# OF RMS	area totals	ROOM NFA ¹	# OF RMS	area totals	ROOM NFA ¹	# OF RMS	area totals
		0			182,140			0
					1,360			201
					273,210			
					1.5			#DIV/0!

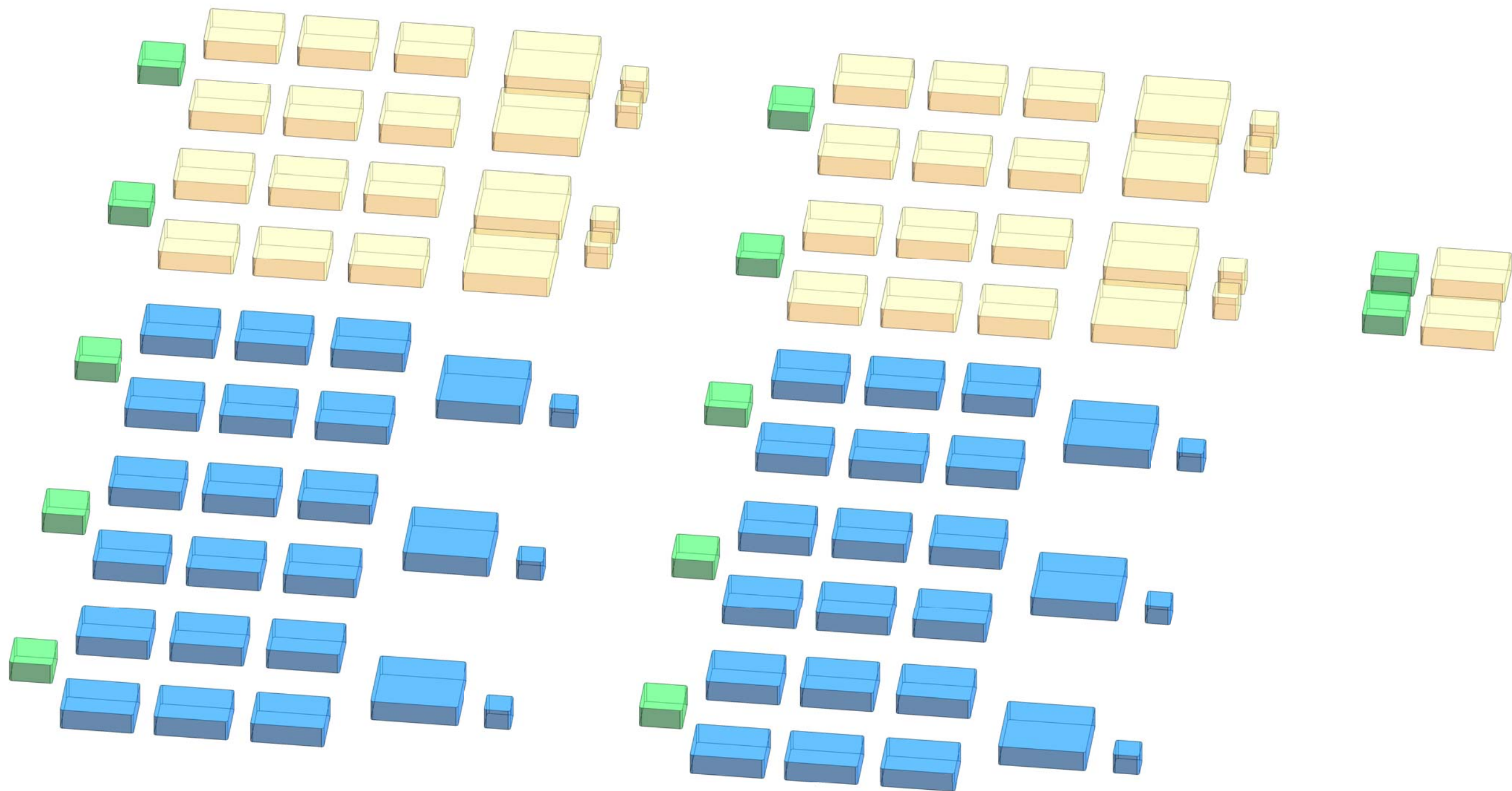
MSBA Guidelines (refer to MSBA Educational Program & Space Standard Guidelines)			
ROOM NFA ¹	# OF RMS	area totals	Comments
		163,906	
		1,360	172
		233,920	245,859
		1.43	1.50

¹ Individual Room Net Floor Area (NFA) Includes the net square footage measured from the inside face of the perimeter walls and includes all specific spaces assigned to a particular program area including such spaces as non-communal toilets and storage rooms.

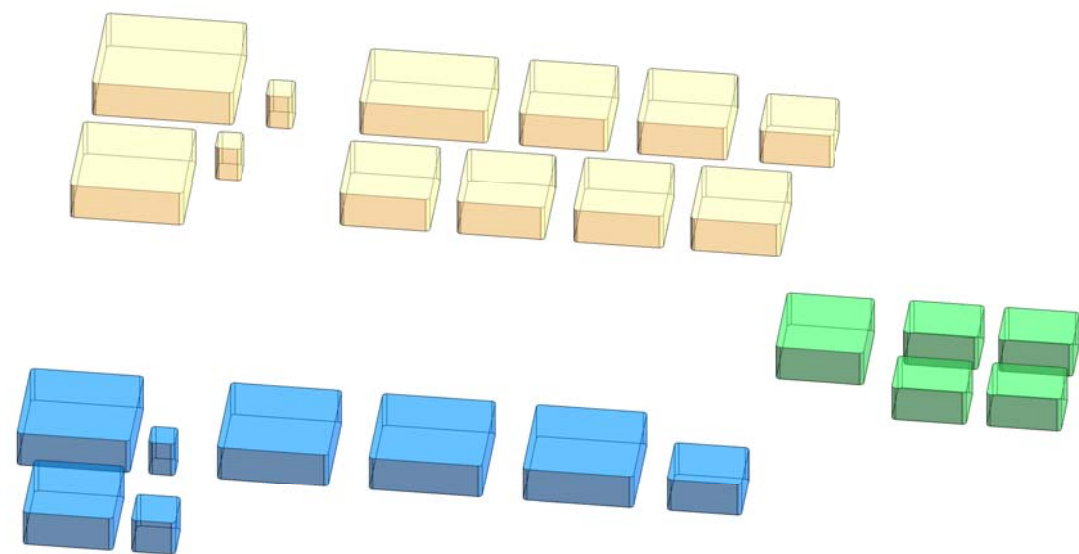
² Total Building Gross Floor Area (GFA) Includes the entire building gross square footage measured from the outside face of exterior walls

Architect Certification	I hereby certify that all of the information provided in this "Proposed Space Summary" is true, complete and accurate and, except as agreed to in writing by the Massachusetts School Building Authority, in accordance with the guidelines, rules, regulations and policies of the Massachusetts School Building Authority to the best of my knowledge and belief. A true statement, made under the penalties of perjury.
Name of Architect Firm:	
Name of Principal Architect:	
Signature of Principal Architect:	
Date:	

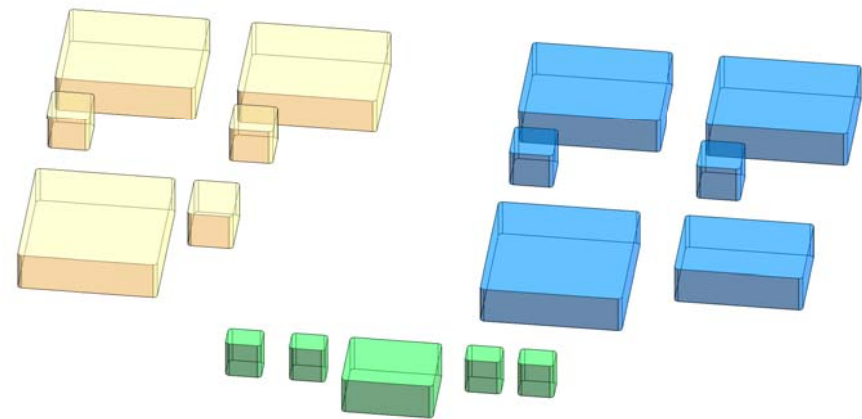
CORE ACADEMIC SPACES



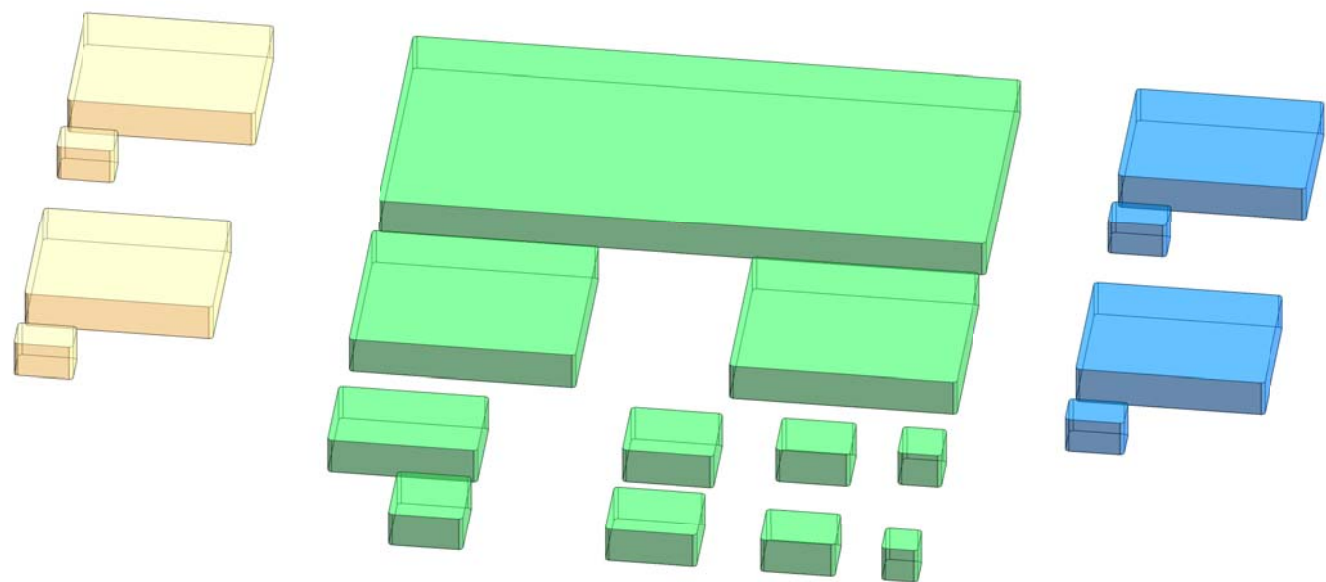
SPECIAL EDUCATION



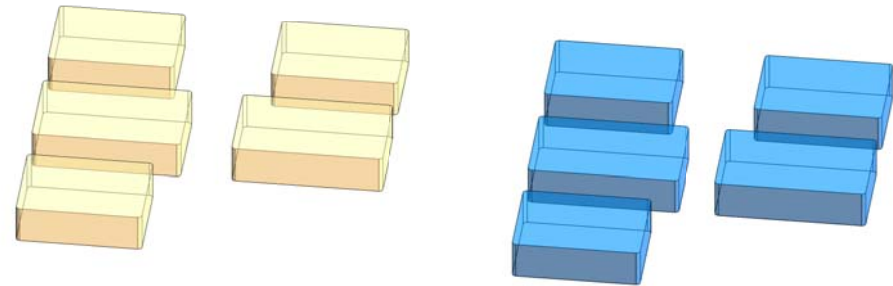
ART & MUSIC



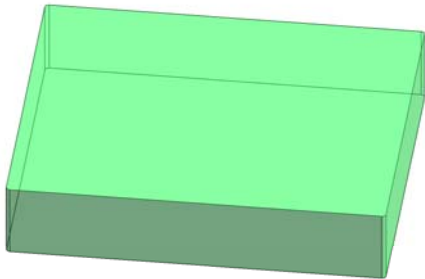
HEALTH & PHYSICAL
EDUCATION



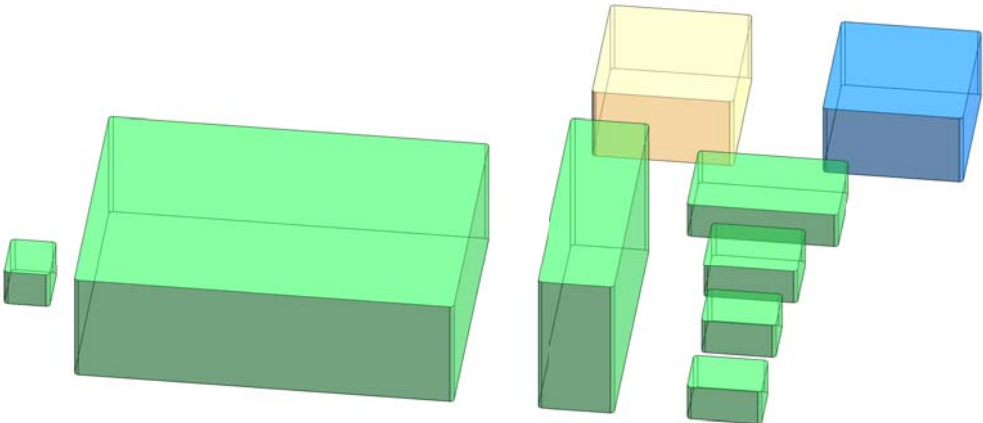
VOCATIONS &
TECHNOLOGY



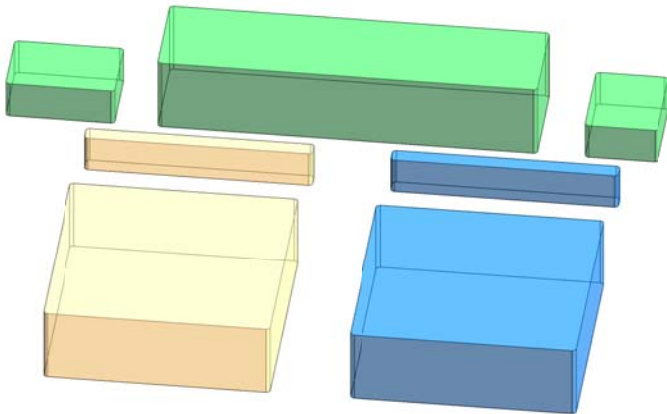
LEARNING COMMONS



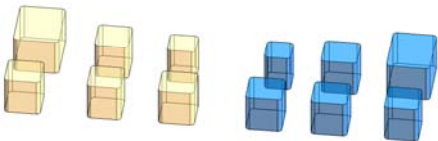
AUDITORIUM/ DRAMA



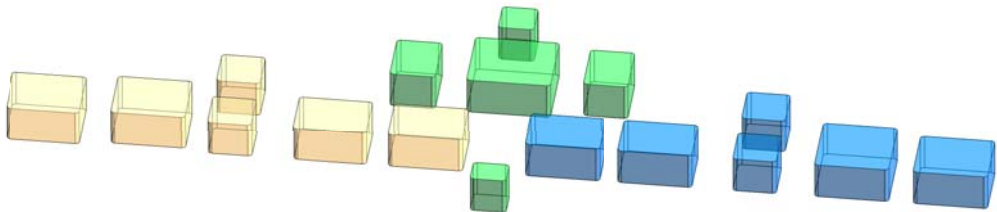
DINING & FOOD SERVICES



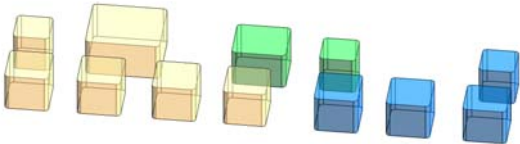
MEDICAL



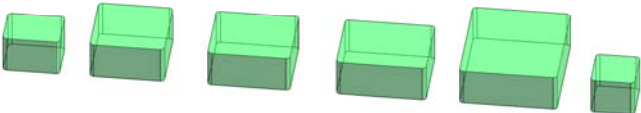
ADMINISTRATION



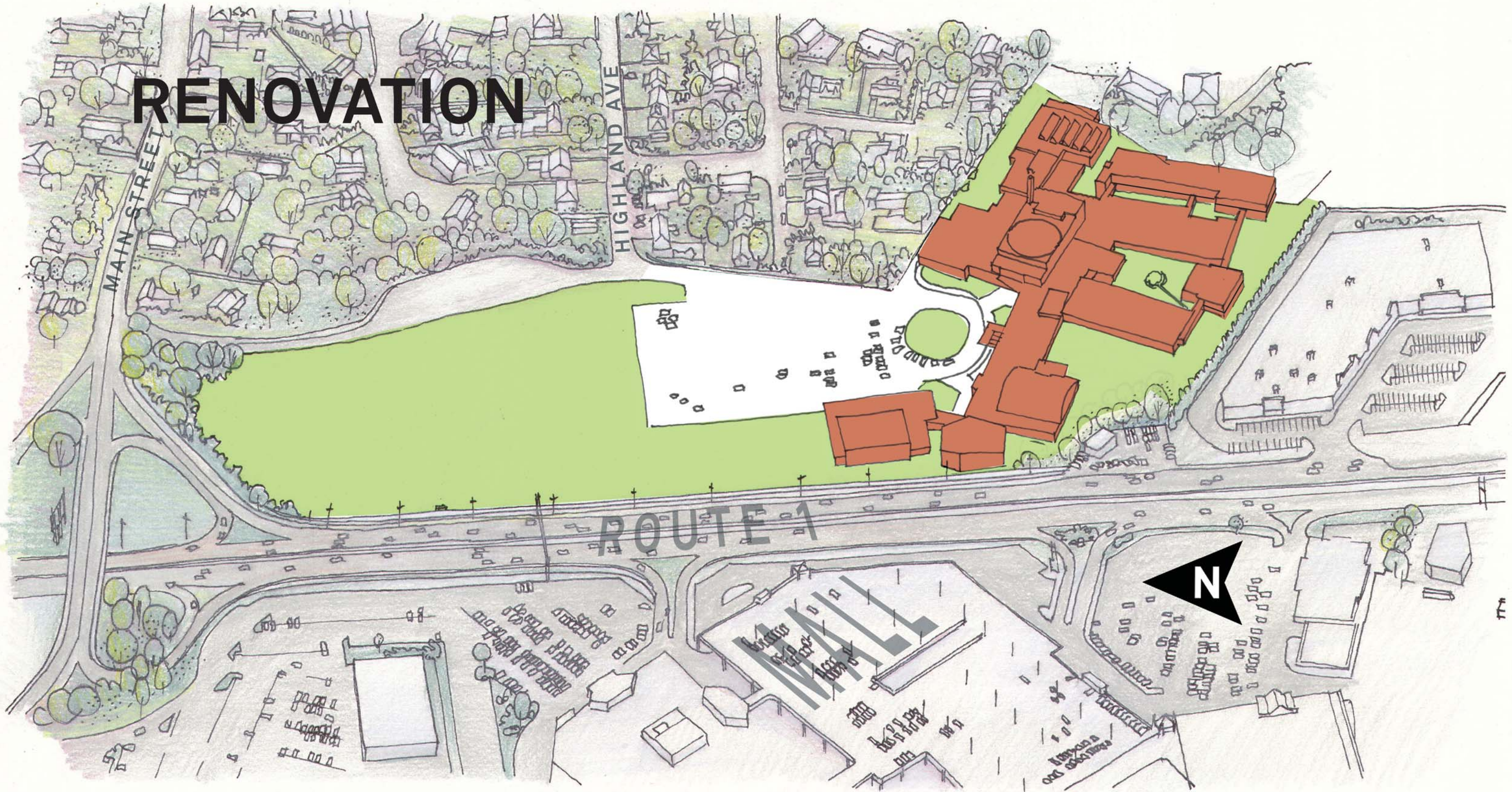
GUIDANCE



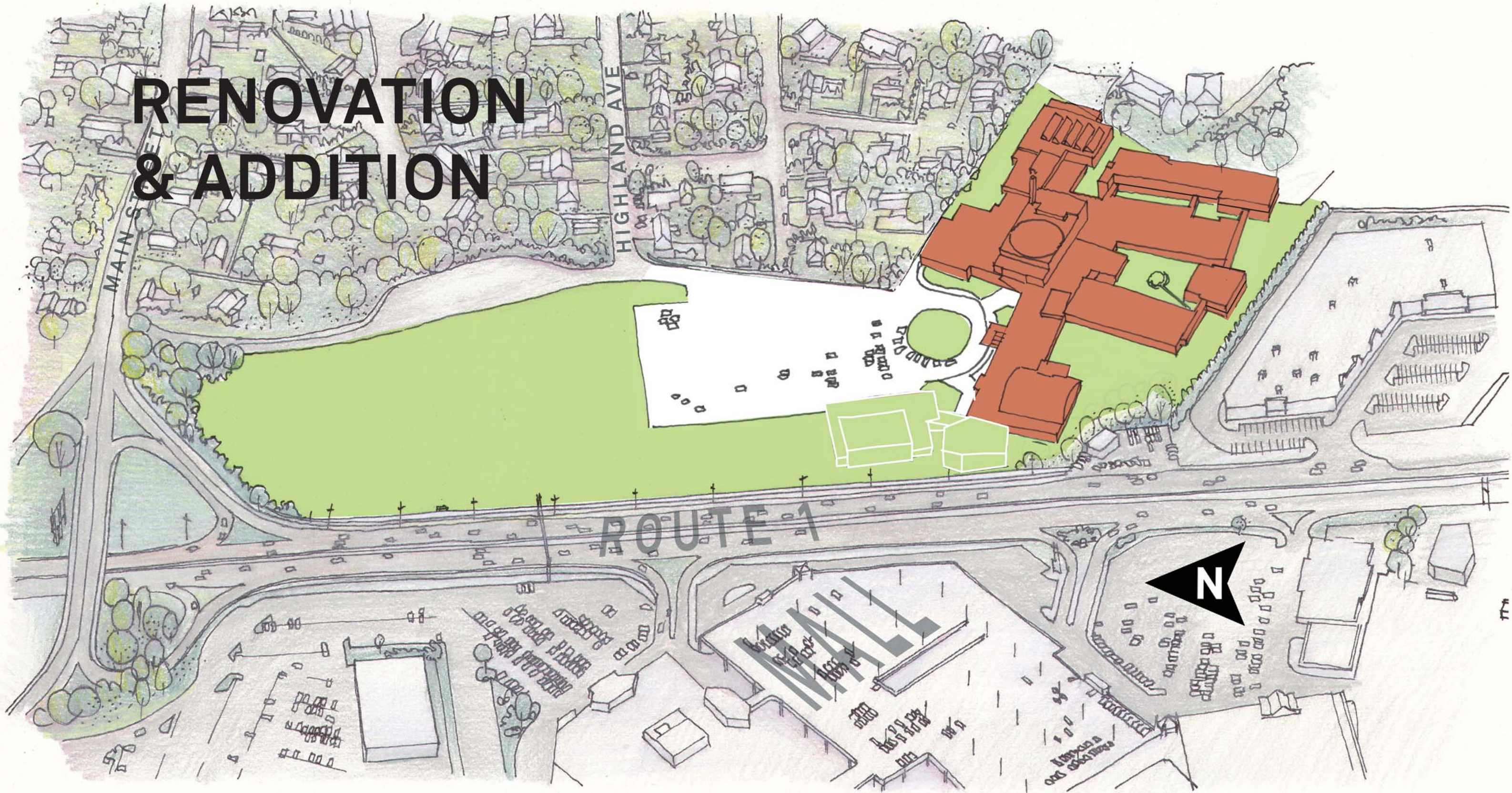
CUSTODIAL & MAINTENANCE



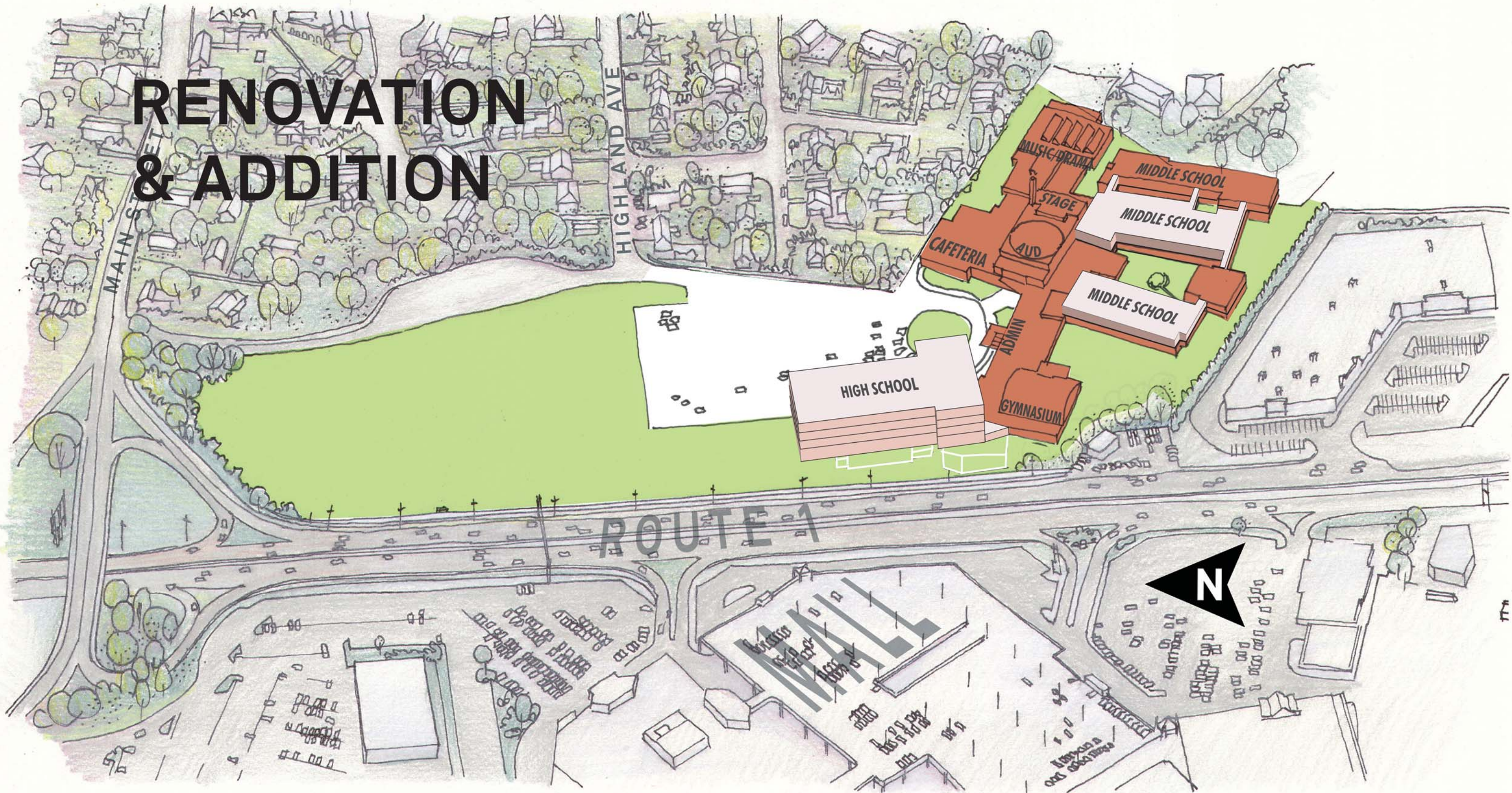
RENOVATION



RENOVATION & ADDITION



RENOVATION & ADDITION



NEW CONSTRUCTION

