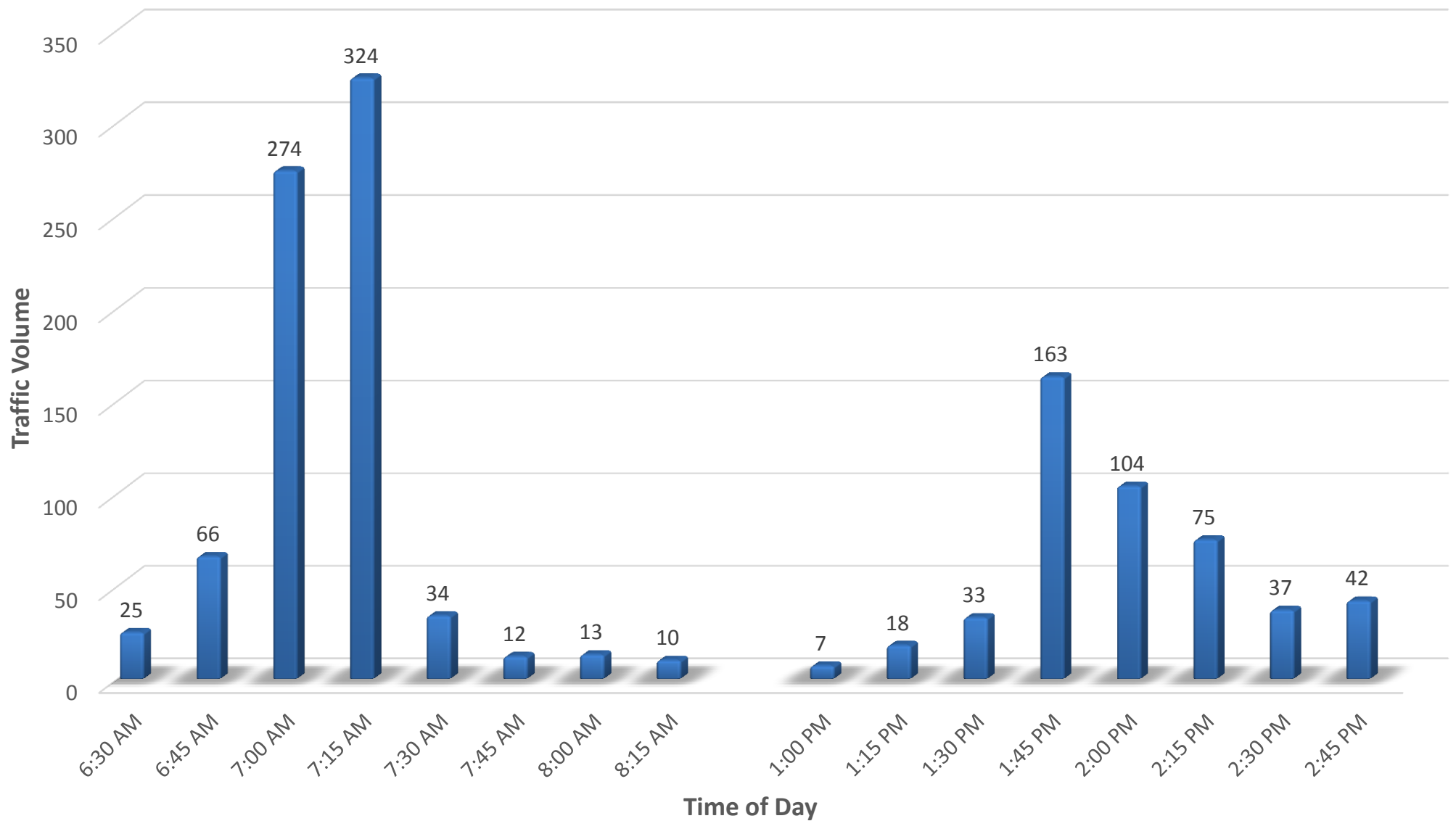


Site Location Map



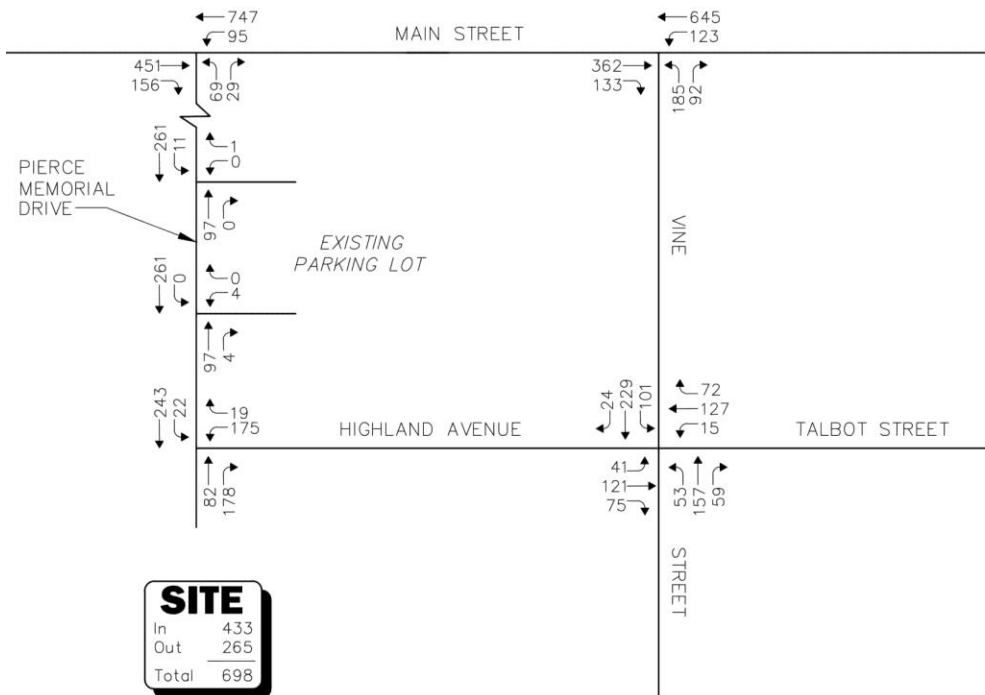
Saugus High School Traffic Volumes



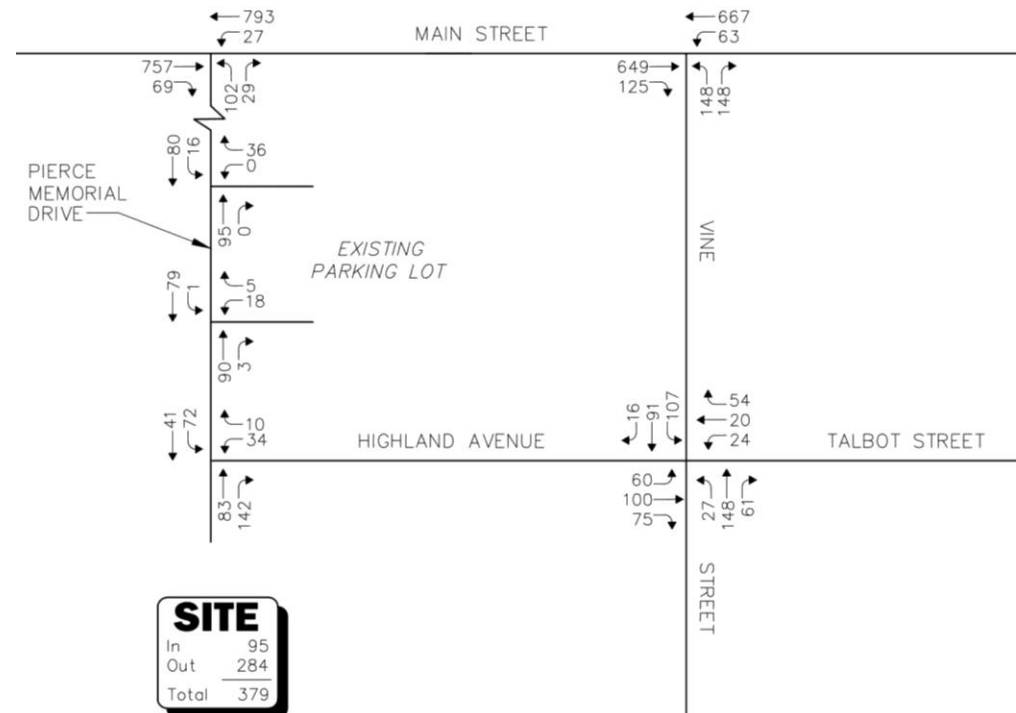
Saugus High School

2017 Existing - Weekday

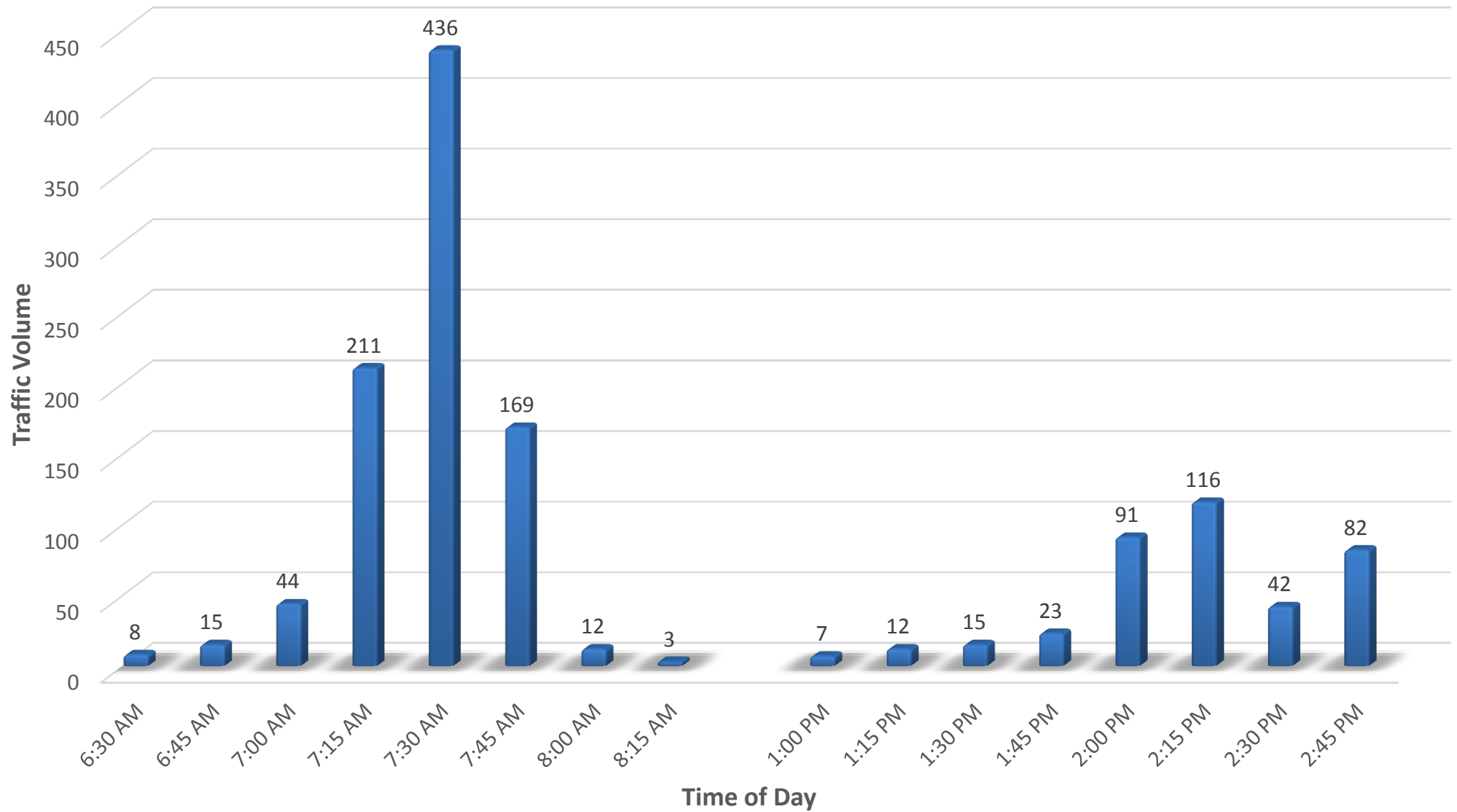
WEEKDAY MORNING PEAK HOUR (6:45-7:45 AM)



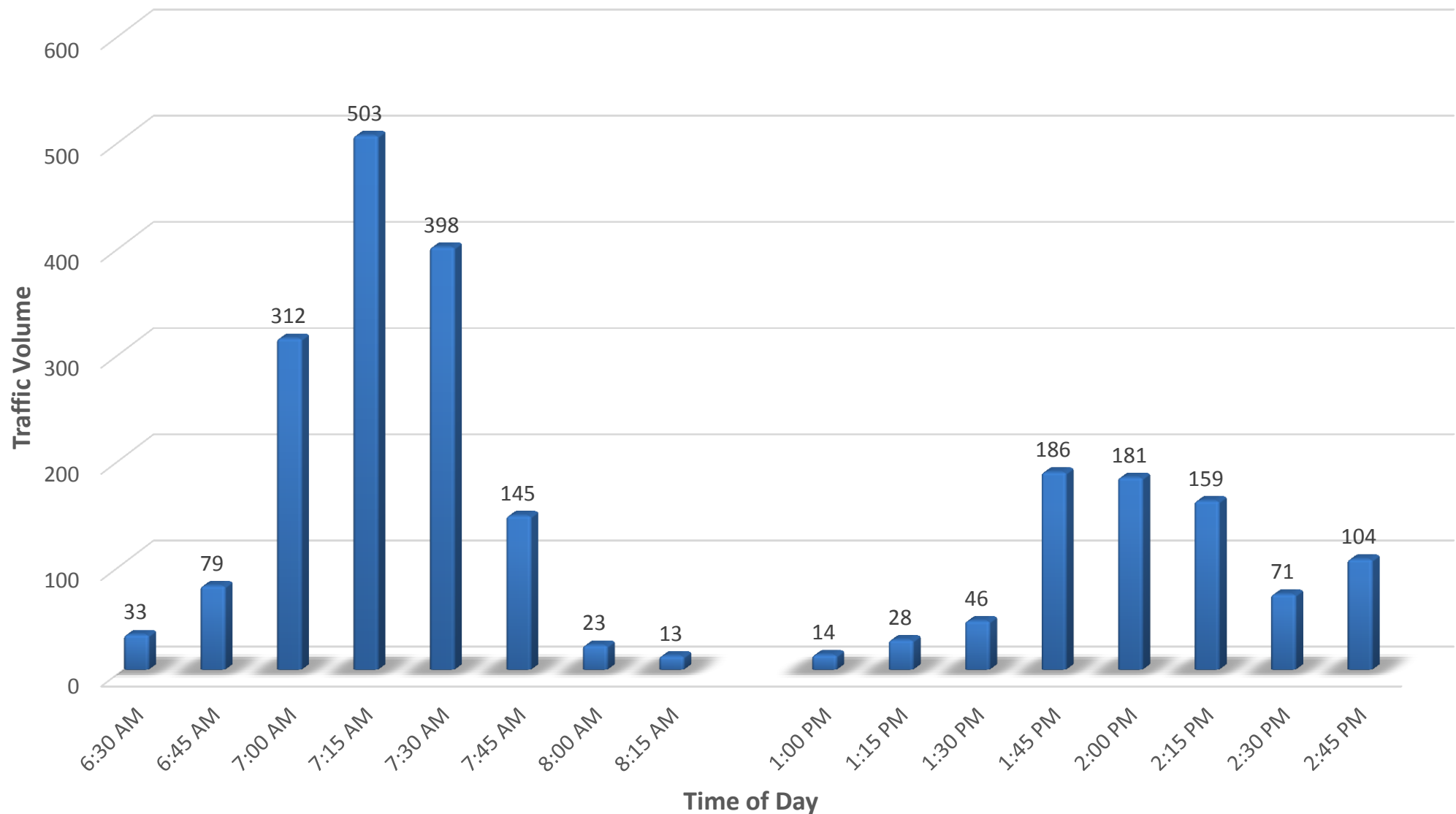
WEEKDAY AFTERNOON PEAK HOUR (1:45-2:45 PM)



Belmonte Middle School Traffic Volumes

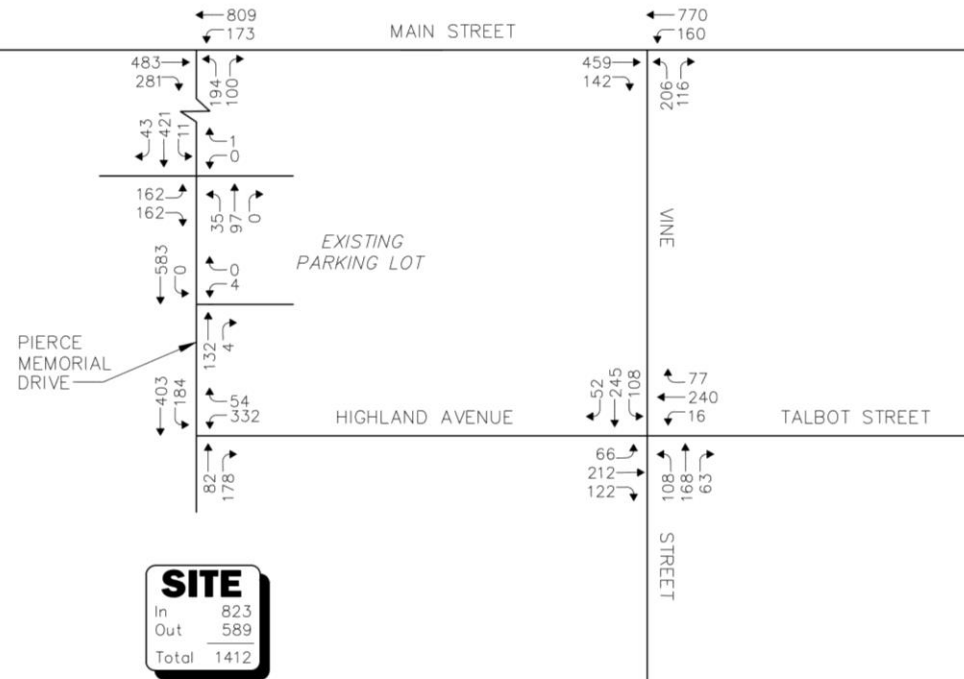


Saugus High School - Belmonte Middle School Combined Traffic Volumes – Existing Times

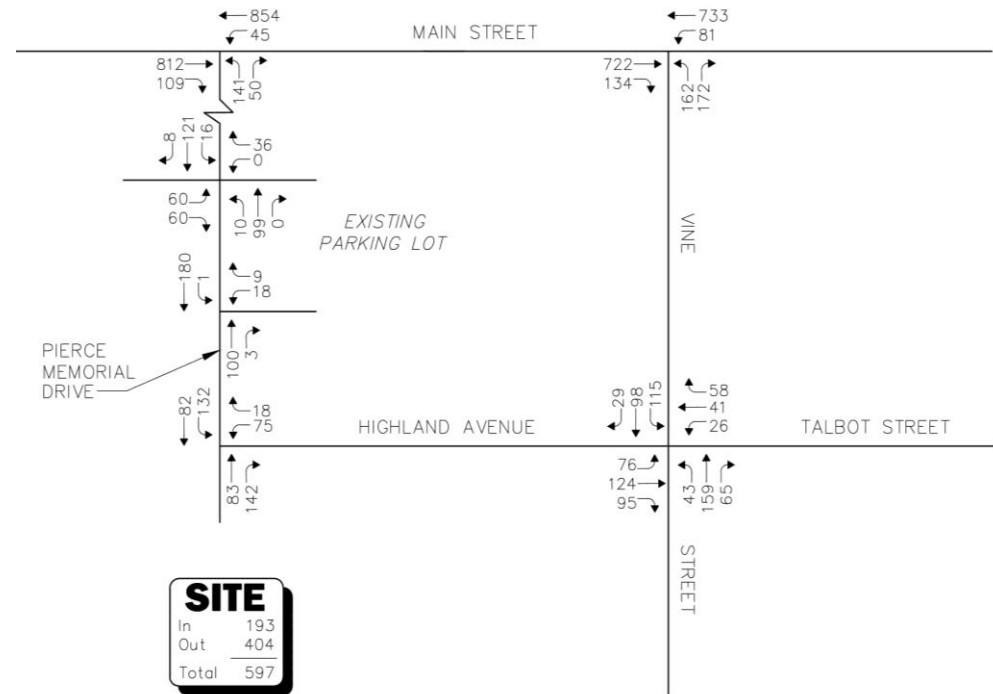


2024 Build - Weekday

WEEKDAY MORNING PEAK HOUR



WEEKDAY AFTERNOON PEAK HOUR



Recommendations

Project Access

- Pierce Memorial Drive at Highland Avenue
 - Peak Hour Left Turn Restriction
 - or
 - Police Control
- Pierce Memorial Drive at Highland Avenue
 - 4-way Stop
- School Zone Signage

School Drop-Off/ Pick-up Traffic Management

- Maintain off-set Start/Stop Time
- High School/Middle School Drop-off
 - Staff
 - Procedures to Parents prior to school year

Alternative Access

- Pursue Either
 - Route 1- Right turn out
 - or
 - Pennybrook Road

Special Events

- Traffic Management Plan
- Off-Site Parking

Post Opening Monitoring

- Traffic Counts
- Drop-off Queues
- Safety

Proposed School Signage Plan

