



OPM STATUS REPORT



TOWN OF
SAUGUS
MASSACHUSETTS



PROJECT: Saugus Middle-High School

DATE: March 18, 2019

Project Phase	GMP / Construction	Facility Type	Combined MS/HS (Grades 6-12)
Construction Type	New Construction	Building Size	269,070 square feet
Project Budget	\$186.1 M (includes Master Plan)	Enrollment Projection	1,360 students
MSBA Funding*	57.72% (includes 4.4% incentive points)	Site Mobilization	July 2018
Sustainability Goal	LEED Silver- 2 Incentive Pts	OPM Contact (PMA)	Kevin Nigro 781.964.9560

RECENT MEETINGS / PROJECT STATUS UPDATE

Meetings since 1/28/19 SBC Meeting:

- 1/30/19: LEED Review Meeting
- 1/31/19: O/A/CM Weekly Meeting
- 1/31/19: Req. Review Meeting
- 2/1/19: BEA Site Visit/Review Meeting
- 2/1/19: GMP Meeting
- 2/5/19: MEP Cx Kickoff Meeting & MSBA Visit
- 2/6/19: Casework Review Meeting
- 2/6/19: HS Furniture Meetings
- 2/6/19: Cased Plumbing/Trigen Coordination Meeting
- 2/7/19: Pre-Pour Site Walk
- 2/7/19: O/A/CM Weekly Meeting
- 2/8/19: HS Furniture Meetings
- 2/8/19: Pre-Pour Site Walk
- 2/12/19: Canatal 90-100% Hold Meeting
- 2/13/19: GMP Review Meeting
- 2/13/19: HS Furniture Meeting
- 2/14/19: Meeting w/ Nurses
- 2/14/19: O/A/CM Weekly Meeting
- 2/14/19: MS Furniture Meeting
- 2/21/19: O/A/CM Weekly Meeting
- 2/21/19: Envelope Review
- 2/25/19: HS Furniture Meetings
- 2/27/19: Truss-Pre-install Meeting
- 2/27/19: GMP Meeting
- 2/28/19: Envelope Review
- 2/28/19: O/A/CM Weekly Meeting
- 2/28/19: Mockup Review Meeting
- 3/1/19: Drywall/Framing Pre-install Meeting
- 3/7/19: Pre-Pour Walkthrough
- 3/7/19: Envelope Review
- 3/7/19: O/A/CM Weekly Meeting
- 3/8/19: Landscape Scope Review
- 3/11/19: Suffolk/PMA Meeting w/HS Principal
- 3/14/19: O/A/CM Weekly Meeting, MSBA visit
- 3/14/19: Envelope Review
- 3/18/19: Design Meeting

GMP Draft received, elements under review include:

- Baseline schedule
- Holds and allowances
- Qualifications and assumptions
- LEED Status
- ASIs incorporated
- Bonds/Insurance
- WBE/MBE participation

Suffolk Amendment #3 (1/10/19)

- Applied Fireproofing
- Food Service Equipment
- Drywall
- Metal Wall Panels
- Curtain Walls

Suffolk Amendment #4 (3/18/19)

- Interior Architectural Woodwork
- Manufactured Casework
- Hollow Metal Doors, Frames, and Hardware
- Winter Conditions

Legend:

A - Middle School

- A1: MS Academic
- MS Tech Shops
- Alt. PE #2 (Fitness)
- MS Locker Rooms

- A2: MS Academic
- Band/Chorus
- Alt PE #1 (Half Court)
- Tech Shops

B - Shared

- B1: Loading Dock/Boiler Room
- Kitchen/Serving
- HS Locker Rooms
- Gymnasium

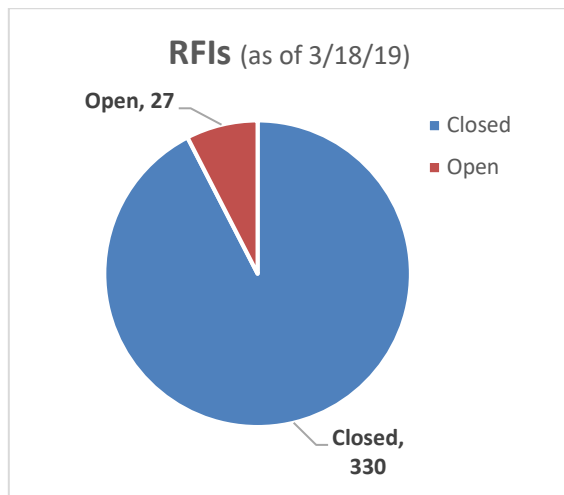
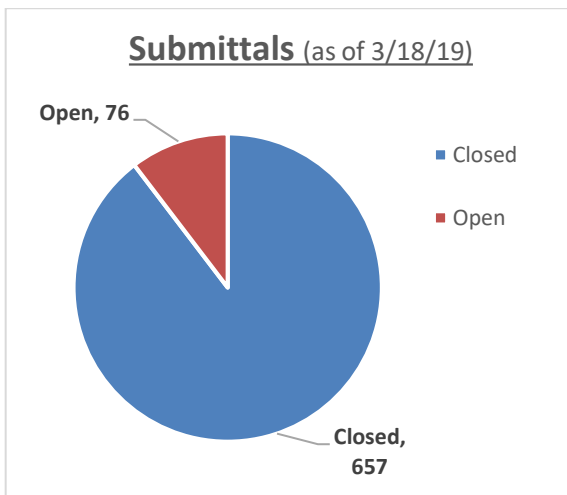
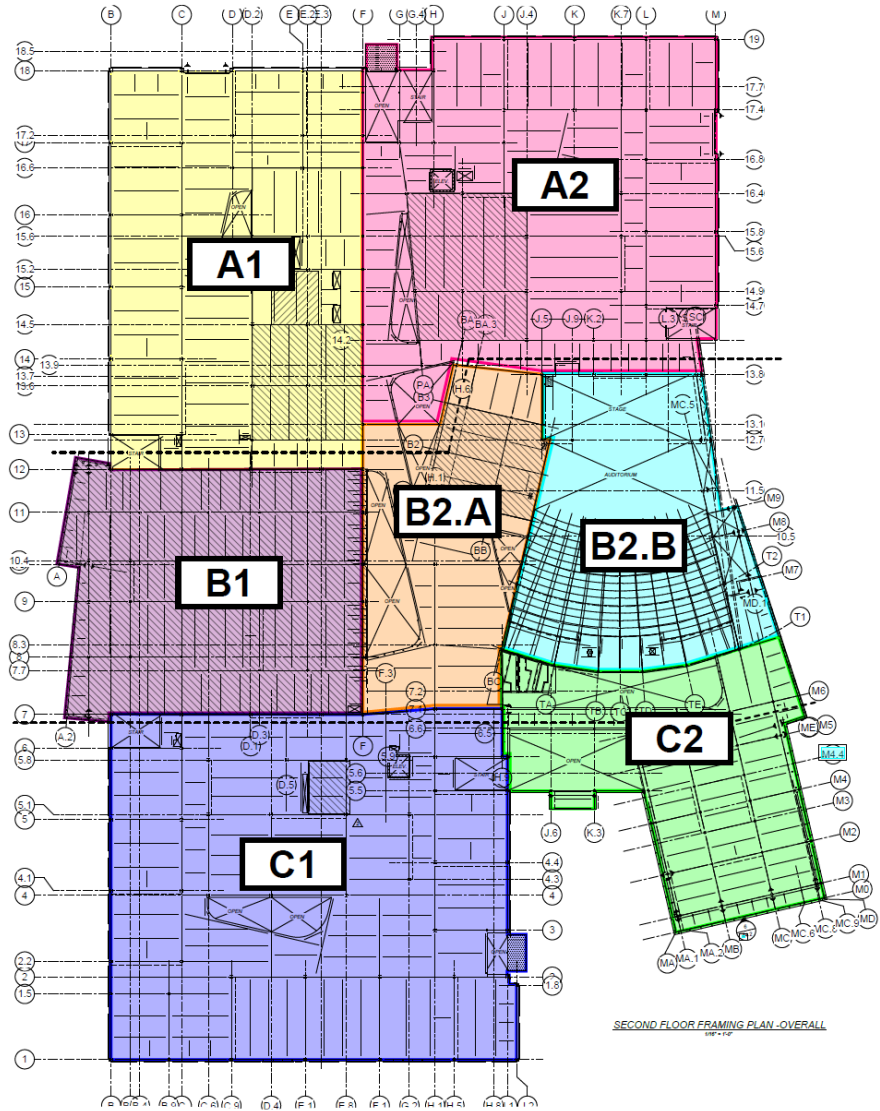
- B2.A: MS/HS Cafeterias
- LS Cafe
- Main Street

- B2.B: Auditorium

C - High School

- C1: HS Academic
- Main Electric Room
- Tech Shops

- C2 - Main Street
- Administration Offices
- Media Center
- HS Cafeteria



March 14, 2019
Saugus Middle/High School Project Budget Summary
Totals through January 2019 (Feb. invoices yet to be processed)

Project Funding Agreement Total Project Budget	\$160,720,553
Architect Feasibility Study (FS)/Schematic Design (SD)	1,028,720
Architect FS/SD Amendment #s 1 through 5	123,035
Architect DD to CA/Closeout	
Amendment #6: Design Documents, Cons. Documents, Bid, Cons. Administration and Closeout	11,291,900
Amendments #7, #8: Add'tl Subconsultants: Asbestos CA, Abatement Monitoring Civil ConComm, NOI, Geo/Env.	300,025
Amendment #9, #10, #11, #13: All related to required additional Traffic Engineering and MassDot Requirements	47,190
Amendment #12: Samiotes & CSS Design Fee : Revised parking layout and added basketball court	22,275
Amendment #14, #16: McPhail : Prepare Soil Packages paperwork and CA at building footprint and for Phase 3 : Stadium & Outbuildings	157,850
Amendment #15: Vanasse – CA services related to work at/near Rt. 1 and on Main Street	12,100
Sub Total A/E	\$12,983,095
OPM FS/SD	453,961
Amendment #1: Design Documents, Cons. Docs, Bid, Cons. Administration and Closeout Phases	4,035,026
Amendment #2, #3: VJA DD & CD Cost Estimating Services	41,250
Amendment #4: BEA & UTS: façade design review/testing; Construction testing (soils, concrete, rebar, etc.)	301,950
Sub Total OPM	\$4,832,187
CMR-Suffolk	
Pre-Construction Services	350,132
Amendment No. 01: General Conditions/General Requirements, Phase 1 & 2 Builders Risk Insurance Early Bid Packages: Site & Earthwork, Demo/Abatement, Concrete, Structural Steel, Cogen Equip., Roof Top Units	39,989,626
Amendment No. 02: All Trade-Contractor Contracts	41,156,890
Amendment No. 03: Portion of remaining Non-Trade Contracts, General Liability Insurance and CM Fee on Approved Subcontractor Packages	22,738,898
Sub Total CMR	\$104,235,546
Total Contract Values to Date	\$122,050,828
Invoices/Cost Thru January 2019	\$29,445,567
Balance to Finish	\$131,274,986
MSBA	
Pro Pay Reimbursement Payments to Date	\$11,766,068
Pro Pay Reimbursements Payments Pending	\$1,767,003